

GGA3 PBD Agarose Beads

CATALOG NUMBER: STA-419

STORAGE: -20°C

QUANTITY AND CONCENTRATION: 800 μ L of 50% Agarose slurry, 400 μ g human GGA3-PBD (amino acid 1-316) in 1X PBS, 50% Glycerol

SHELF LIFE: 1 year from receipt under proper storage conditions; avoid multiple freeze thaw cycles

Background

Small GTP-binding proteins (or GTPases) are a family of proteins that serve as molecular regulators in signaling transduction pathways. Arf, a 20 kDa protein of the Ras superfamily, regulates a variety of biological response pathways that include vesicle trafficking, organelle structure, and endocytosis. Like other small GTPases, Arf regulates molecular events by cycling between an inactive GDP-bound form and an active GTP-bound form. In their active (GTP-bound) state, Arf1 and Arf6 bind specifically to the protein-binding domain (PBD) of GGA3 to control downstream signaling cascades.

Presentation

GGA3 PBD Agarose beads, in color, are easy to visualize, minimizing potential loss during washes and aspirations of Arf-GTP pulldown (Figure 1).



Figure 1: GGA3-PBD Beads in Color

Activity

Product specifically interacts and precipitates GTP-bound Arf from cell lysate (Figure 2).

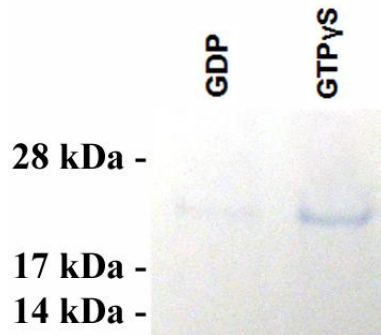


Figure 2: Arf1 Activation Assay. *Lane 1*, HeLa cell lysate loaded with GDP and incubated with GGA3 PBD Agarose beads. *Lane 2*, HeLa cell lysate loaded with GTP γ S and incubated with GGA3 PBD Agarose beads.

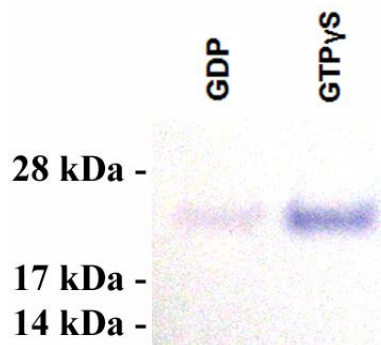


Figure 3: Arf6 Activation Assay. *Lane 1*, HeLa cell lysate loaded with GDP and incubated with GGA3 PBD Agarose beads. *Lane 2*, HeLa cell lysate loaded with GTP γ S and incubated with GGA3 PBD Agarose beads.

References

1. Moss J., Vaughan M. (1998) *J. Biol. Chem.* **273**:21431–214344.
2. Moss J., Vaughan M. (1995) *J. Biol. Chem.* **270**:12327–12330.
3. Kahn R. A., Gilman A. G. (1986) *J. Biol. Chem.* **261**:7906–7911.
4. Rothman J. E. (1994) *Nature* **372**:55–63.
5. Donaldson J. G., Jackson C. L. (2000) *Curr. Opin. Cell Biol.* **12**:475–482.
6. Donaldson J. G., Klausner R. D. (1994) *Curr. Opin. Cell Biol.* **6**:527–532.
7. Dell'Angelica EC, Puertollano R, Mullins C, et al. (2000) *J Cell Biol.* **149**: 81-94.
8. Takatsu H, Yoshino K, Toda K, Nakayama K. (2002) *Biochem J.* **365**: 369-378.

Recent Product Citations

1. Wee, Y. et al. (2024). Tumour-intrinsic endomembrane trafficking by ARF6 shapes an immunosuppressive microenvironment that drives melanomagenesis and response to checkpoint blockade therapy. *Nat Commun.* **15**(1):6613. doi: 10.1038/s41467-024-50881-1.
2. Sun, Z. et al. (2022). Neuroinflammatory disease disrupts the blood-CNS barrier via crosstalk between proinflammatory and endothelial-to-mesenchymal-transition signaling. *Neuron.* doi: 10.1016/j.neuron.2022.07.015.
3. You, Z.P. et al. (2018). GEP100/ARF6 regulates VEGFR2 signaling to facilitate high glucose induced epithelial-mesenchymal transition and cell permeability in RPE cells. *Am J Physiol Cell Physiol.* doi: 10.1152/ajpcell.00312.2018.
4. Gibson, C. C. et al. (2015). Dietary vitamin D and its metabolites non-genomically stabilize the endothelium." *PLoS One.* **10**:e0140370.
5. Davis, C. T. et al. (2014). ARF6 inhibition stabilizes the vasculature and enhances survival during endotoxic shock. *J Immunol.* **192**:6045-6052.

Warranty

These products are warranted to perform as described in their labeling and in Cell Biolabs literature when used in accordance with their instructions. THERE ARE NO WARRANTIES THAT EXTEND BEYOND THIS EXPRESSED WARRANTY AND CELL BIOLABS DISCLAIMS ANY IMPLIED WARRANTY OF MERCHANTABILITY OR WARRANTY OF FITNESS FOR PARTICULAR PURPOSE. CELL BIOLABS' sole obligation and purchaser's exclusive remedy for breach of this warranty shall be, at the option of CELL BIOLABS, to repair or replace the products. In no event shall CELL BIOLABS be liable for any proximate, incidental or consequential damages in connection with the products.

This product is for RESEARCH USE ONLY; not for use in diagnostic procedures.

Contact Information

Cell Biolabs, Inc.
5628 Copley Drive
San Diego, CA 92111
Worldwide: +1 858 271-6500
USA Toll-Free: 1-888-CBL-0505
E-mail: tech@cellbiolabs.com
www.cellbiolabs.com

©2010-2025: Cell Biolabs, Inc. - All rights reserved. No part of these works may be reproduced in any form without permissions in writing.